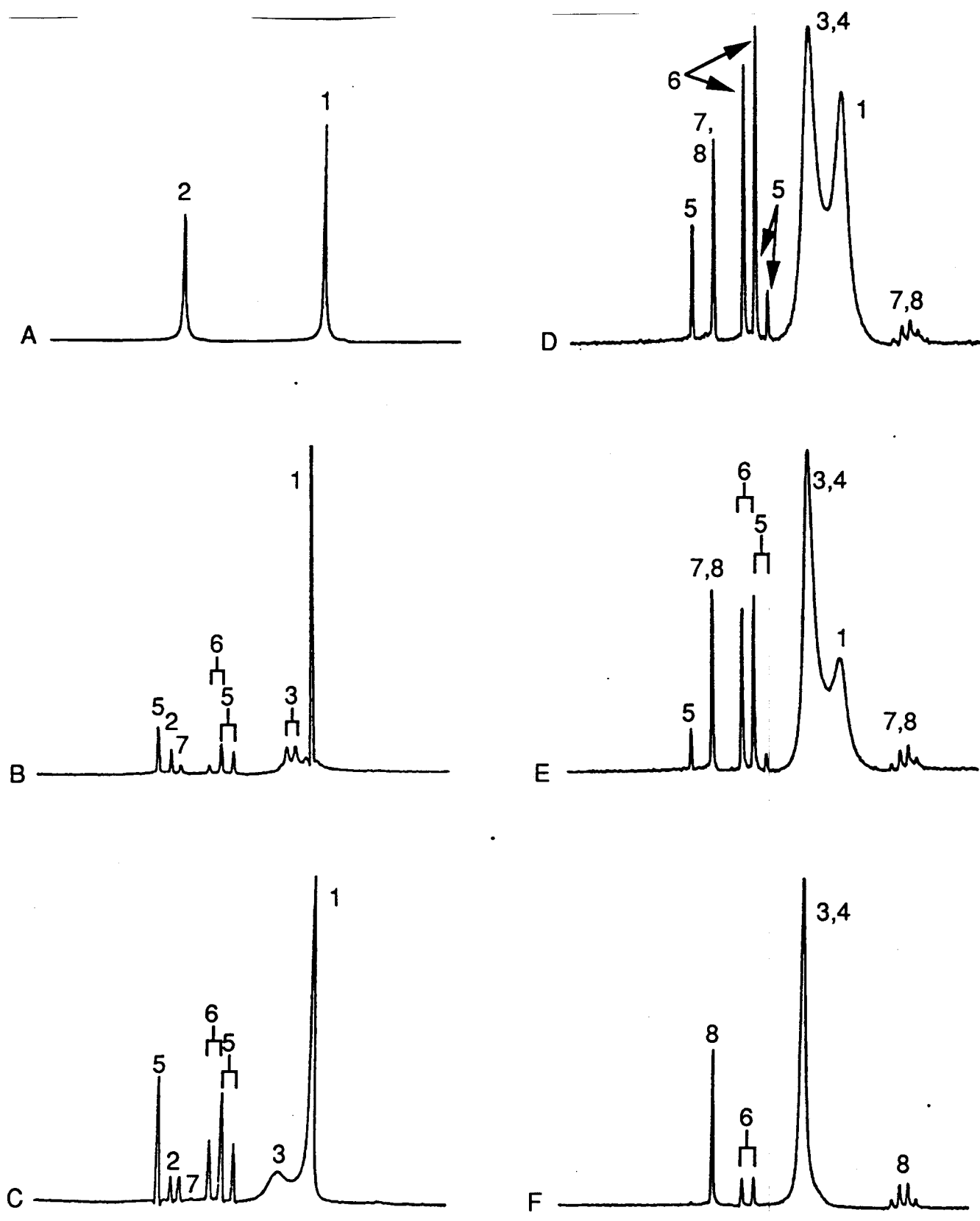


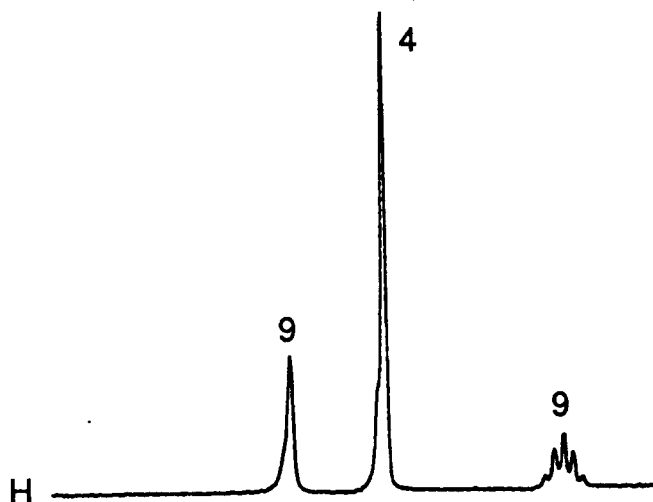
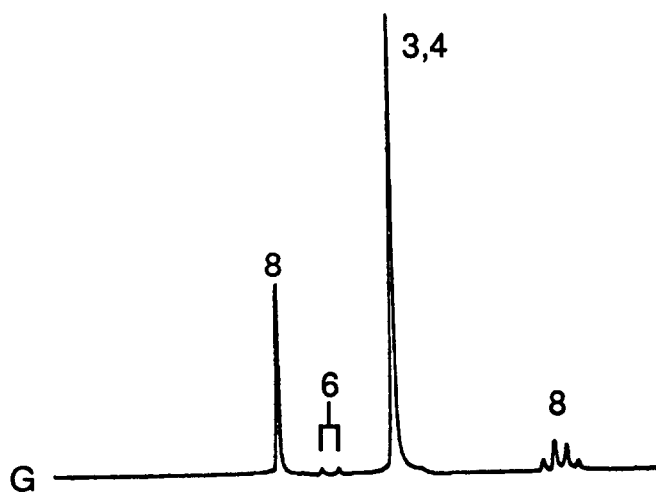
*Resonances are labelled with compound numbers from main text.

J-3483-m1



(cont. on next page)

J-3483-ma

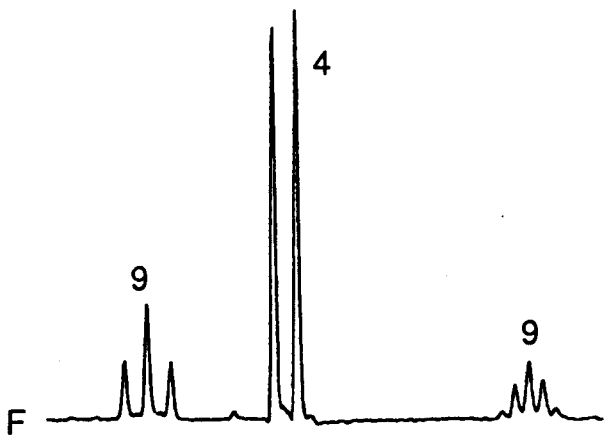
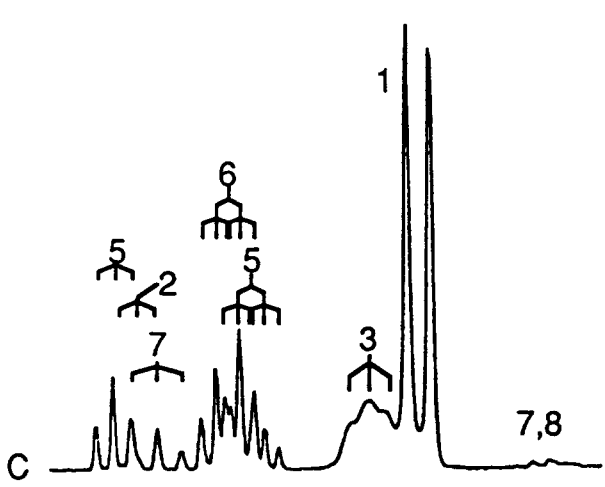
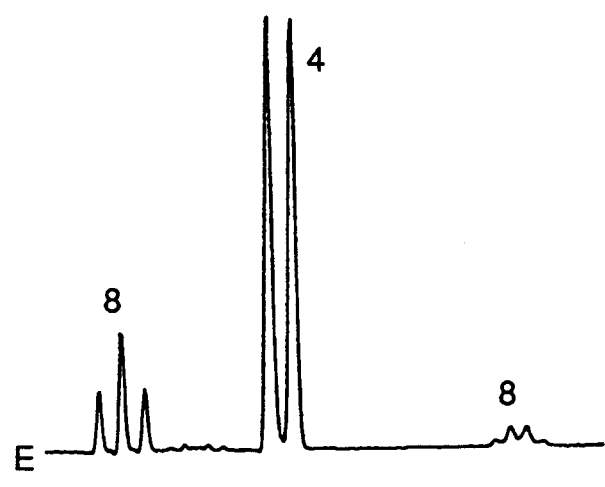
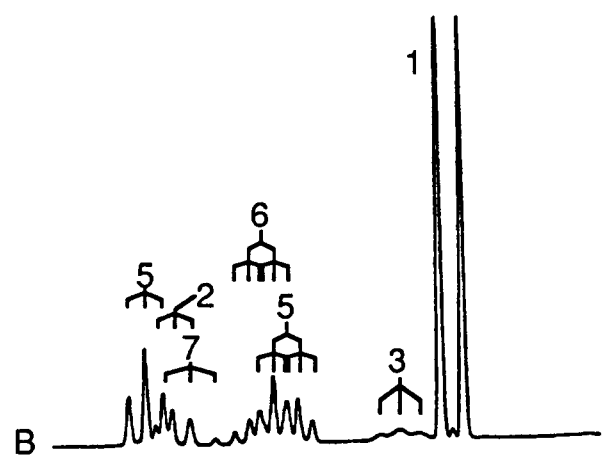
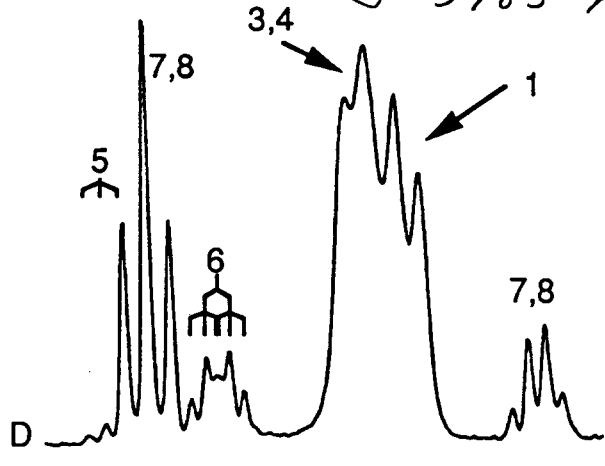
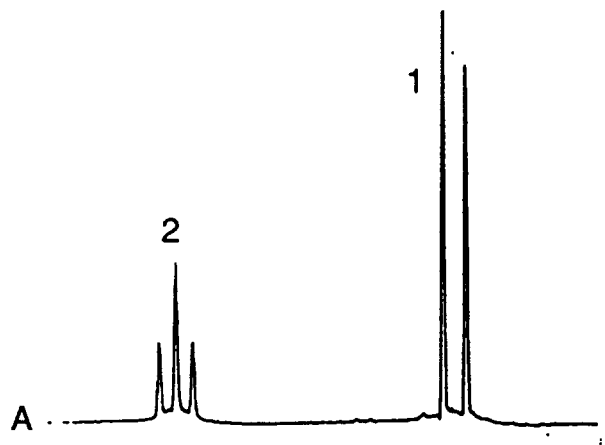


I. ${}^6\text{Li}$ NMR spectra of 0.13 M $[\text{}^6\text{Li}]\text{LiHMDS}$ in 3:1 THF/pentane at $-115\text{ }^\circ\text{C}$ with the following equiv. of HMPA/Li: (A) 0.0; (B) 0.3; (C) 0.5; (D) 0.8; (E) 1.0; (F) 1.5; (G) 1.8; (H) 2.0.

© 1993 Am. Chem. Soc.
J. Am. Chem. Soc. v 115
p. 3475 Romesberg

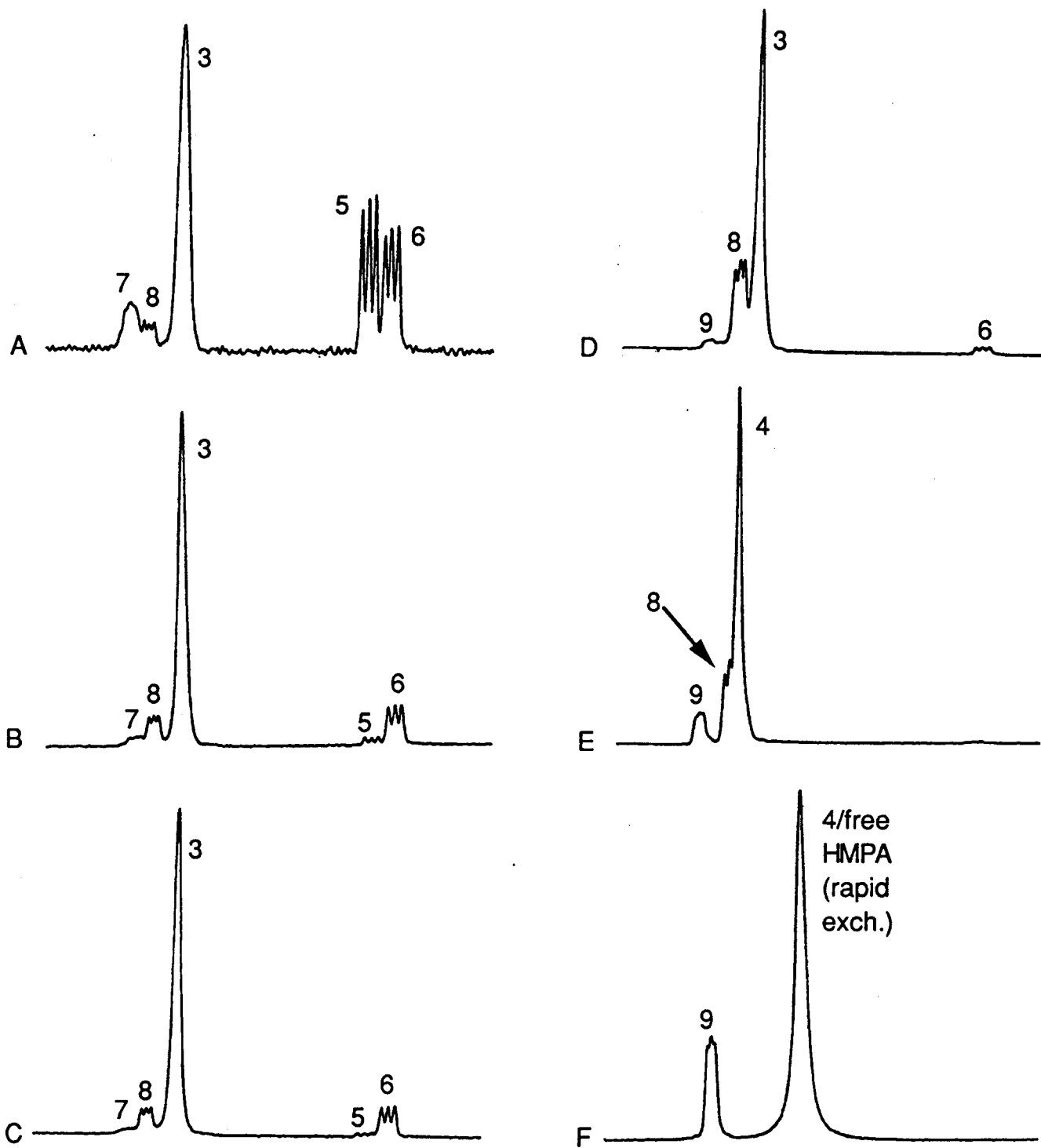
Supplementary material,
page 2

S-3483-m3



II. ${}^6\text{Li}$ NMR spectra of 0.13 M $[{}^6\text{Li}, {}^{15}\text{N}]\text{LiHMDS}$ in 3:1 THF/pentane at $-115\text{ }^\circ\text{C}$ with the following equiv. of HMPA/Li: (A) 0.0; (B) 0.3; (C) 0.5; (D) 1.0; (E) 1.5; (F) 2.0.

J-3483-m4⁴



III. ³¹P NMR spectra of 0.13 M [⁶Li]LiHMDS in 3:1 THF/pentane at -120 °C with the following equiv. of HMPA/Li: (A) 0.3; (B) 0.8; (C) 1.0; (D) 1.5; (E) 2.0; (F) 4.0.