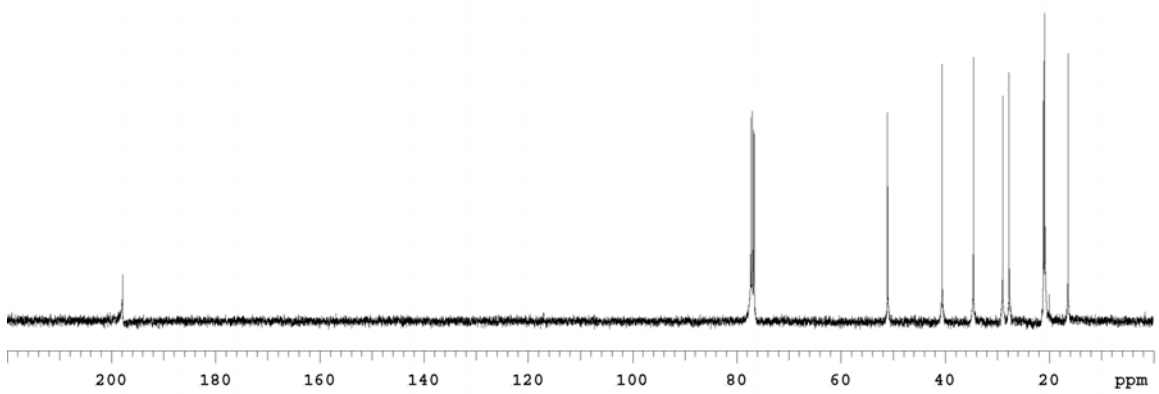
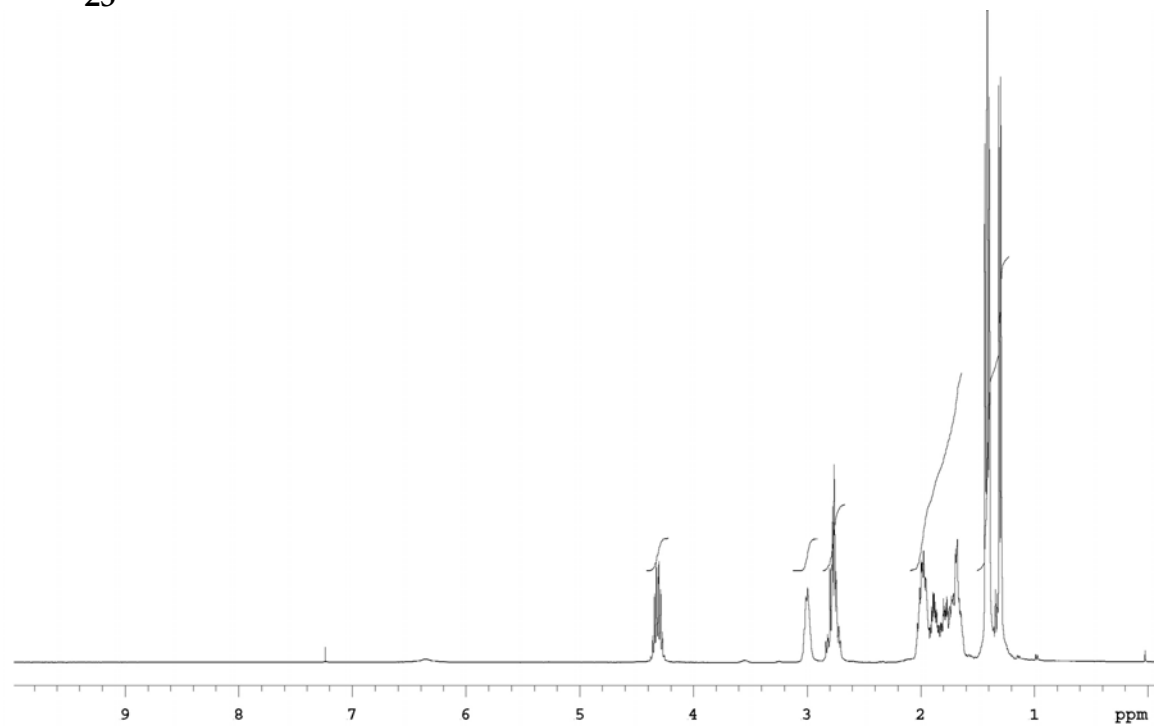
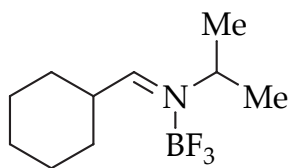


25

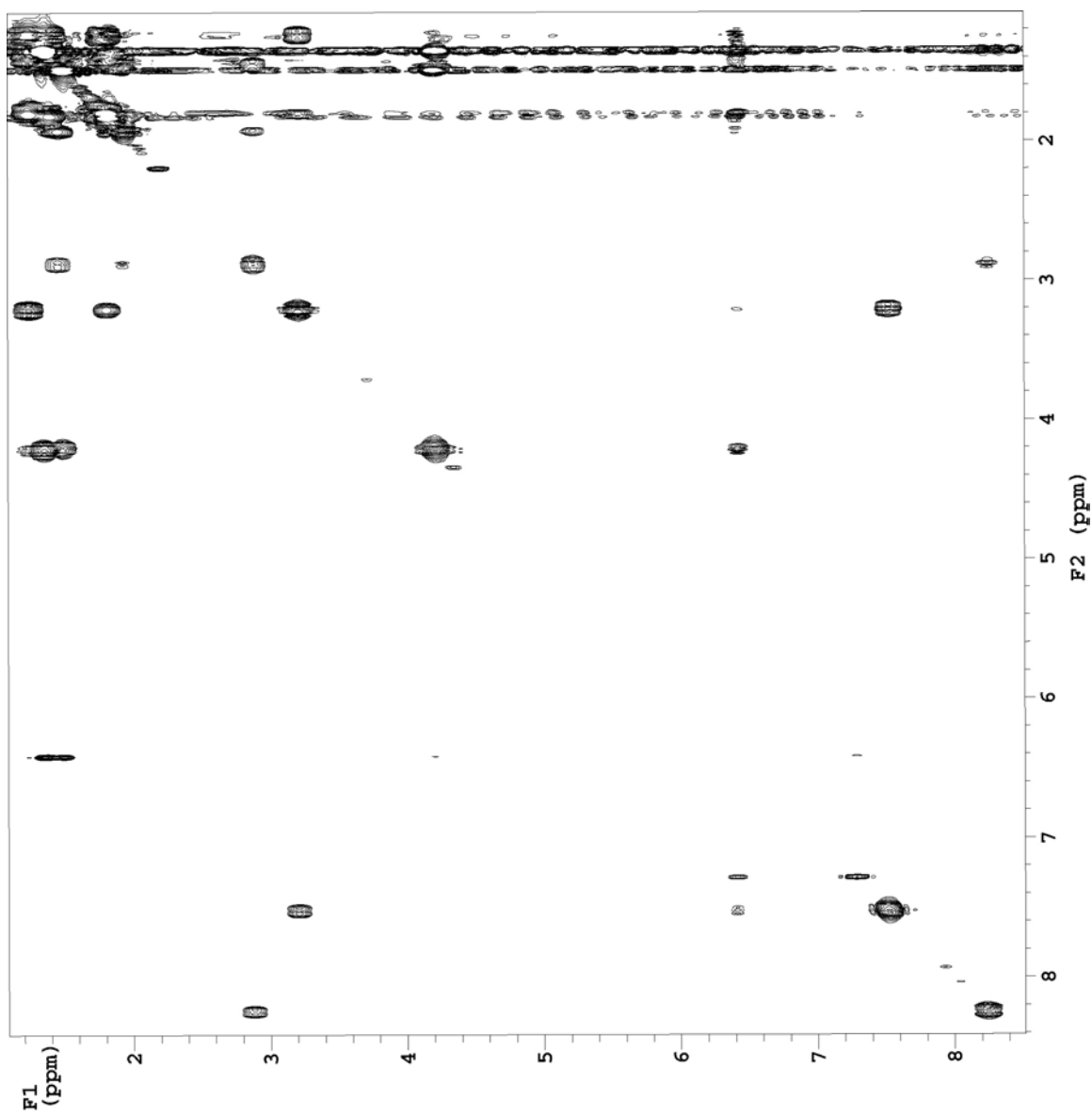
¹H and ¹³C NMR Spectra
(see p S6)

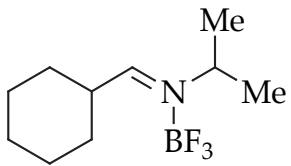




24

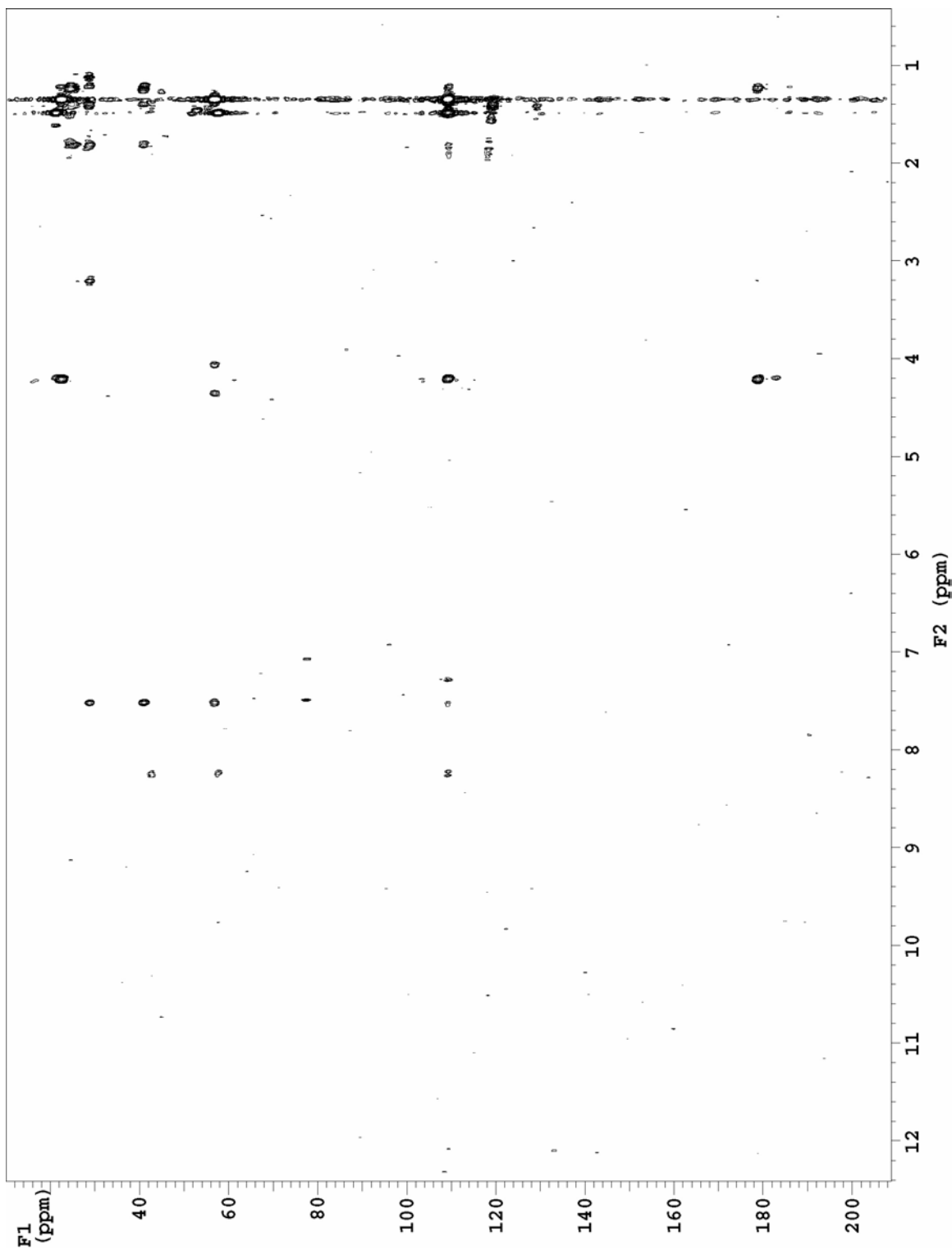
¹H-¹H-COSY Spectrum
(see p S6)

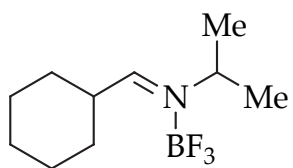




$^1\text{H} - ^{13}\text{C}$ HMBC Spectrum
(see p S6)

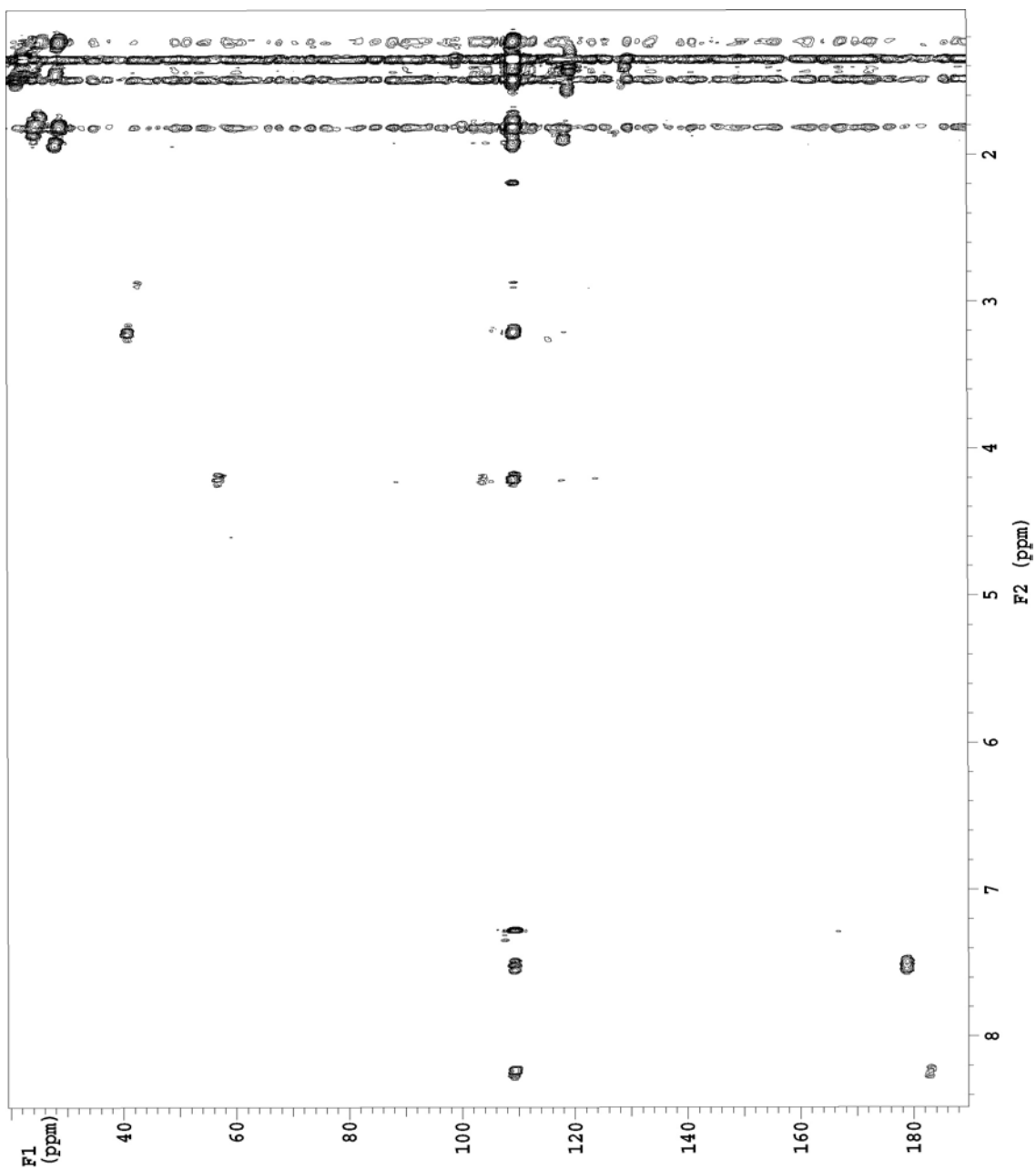
24

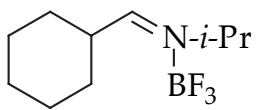




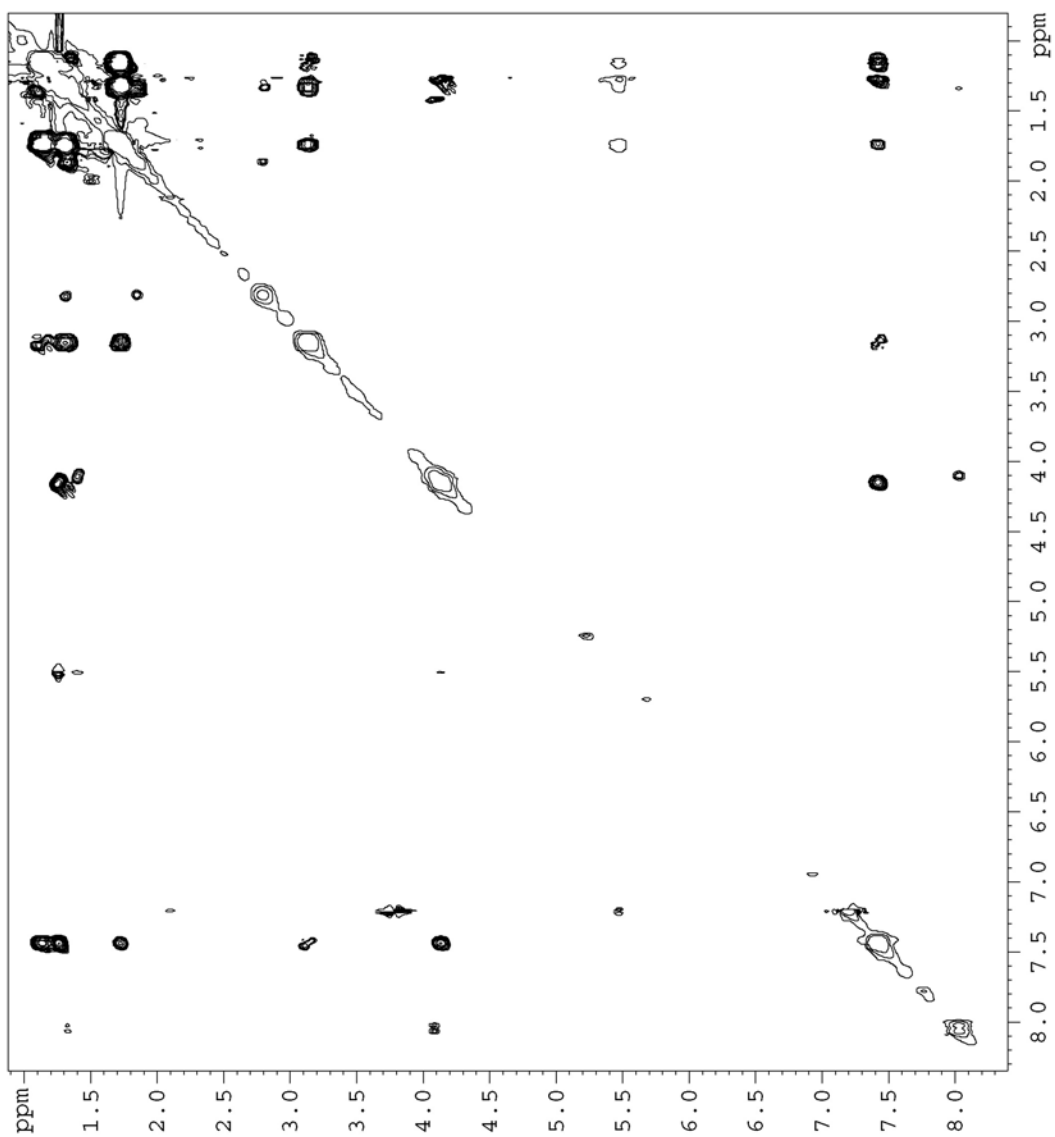
$^1\text{H} - ^{13}\text{C}$ HMQC Spectrum
(see p S6)

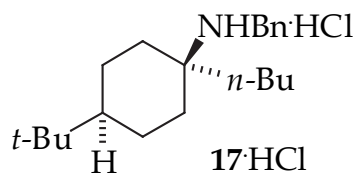
24



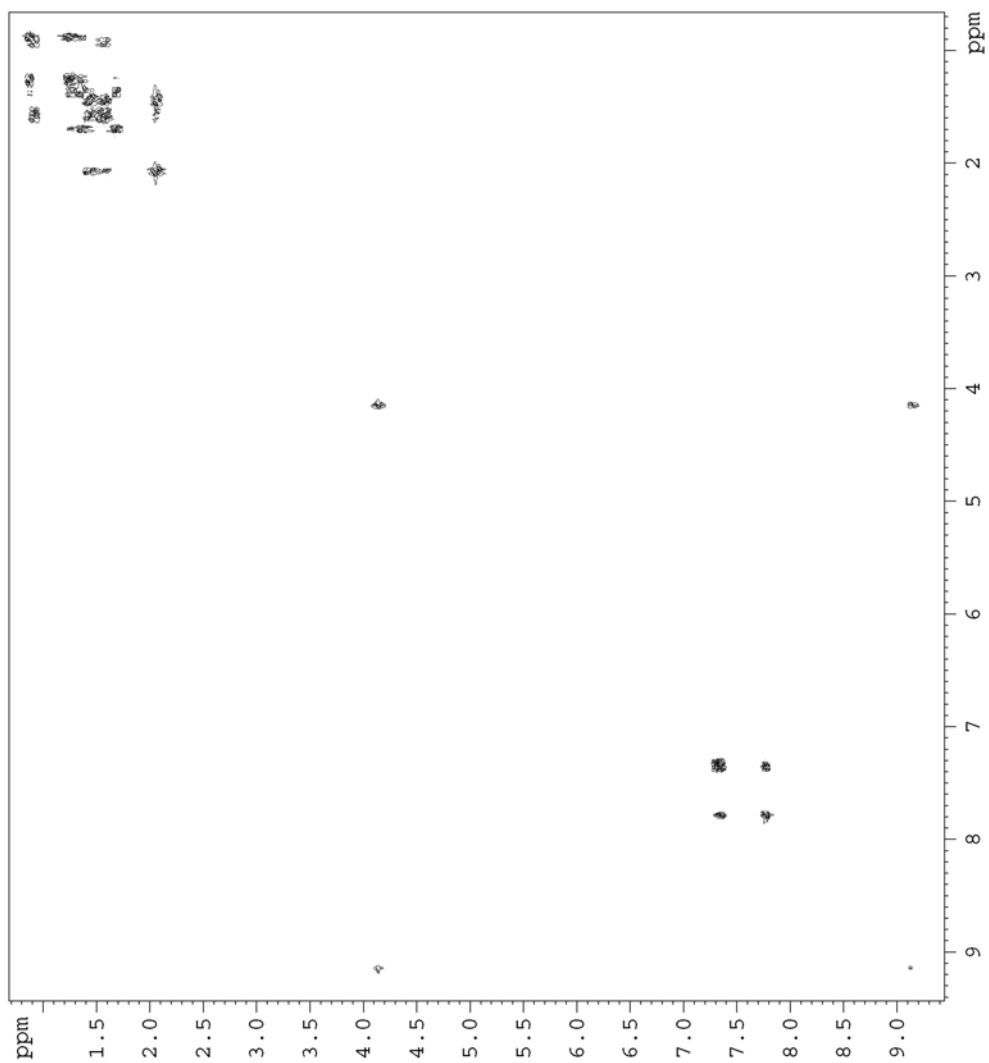


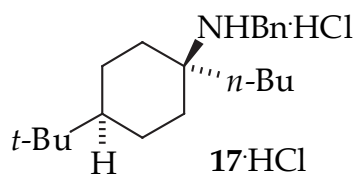
¹H-¹H NOESY Spectrum
(see p S6)



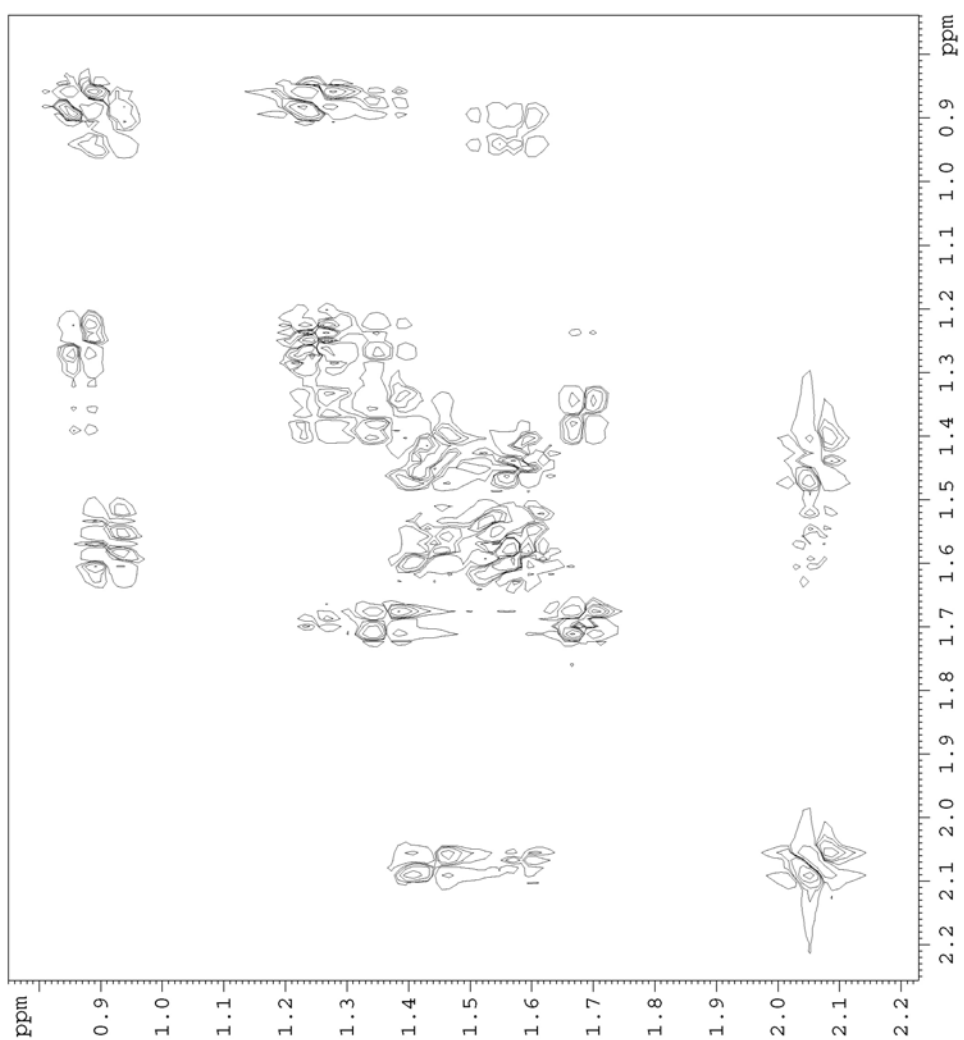


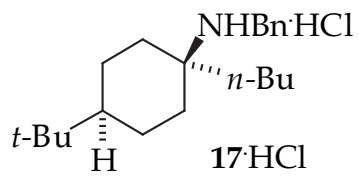
^1H - ^1H -COSY Spectrum
(see p S12)



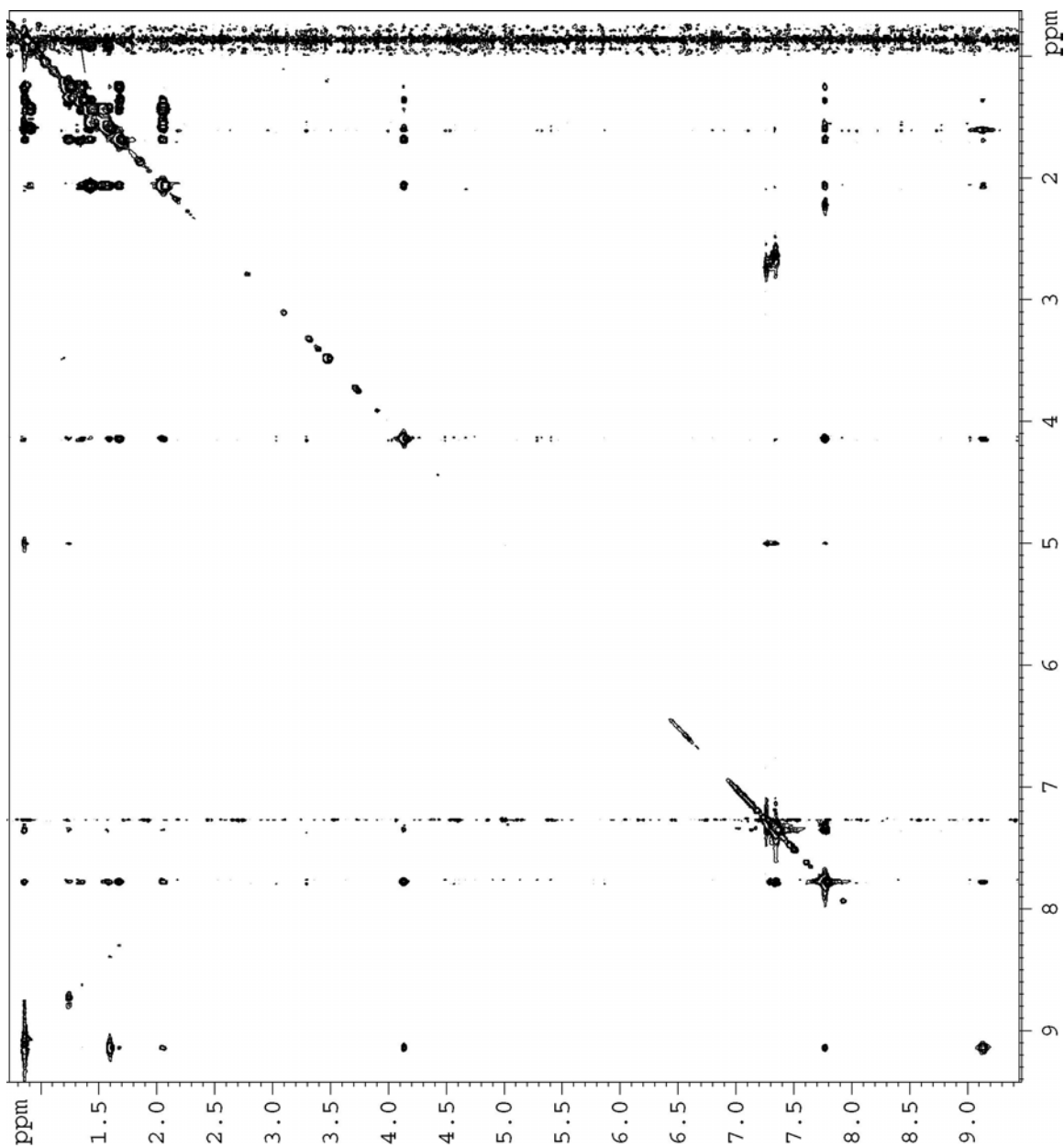


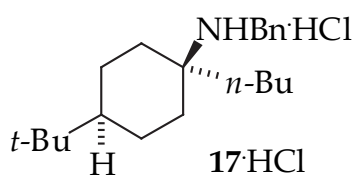
^1H - ^1H -COSY Spectrum
(see p S12)



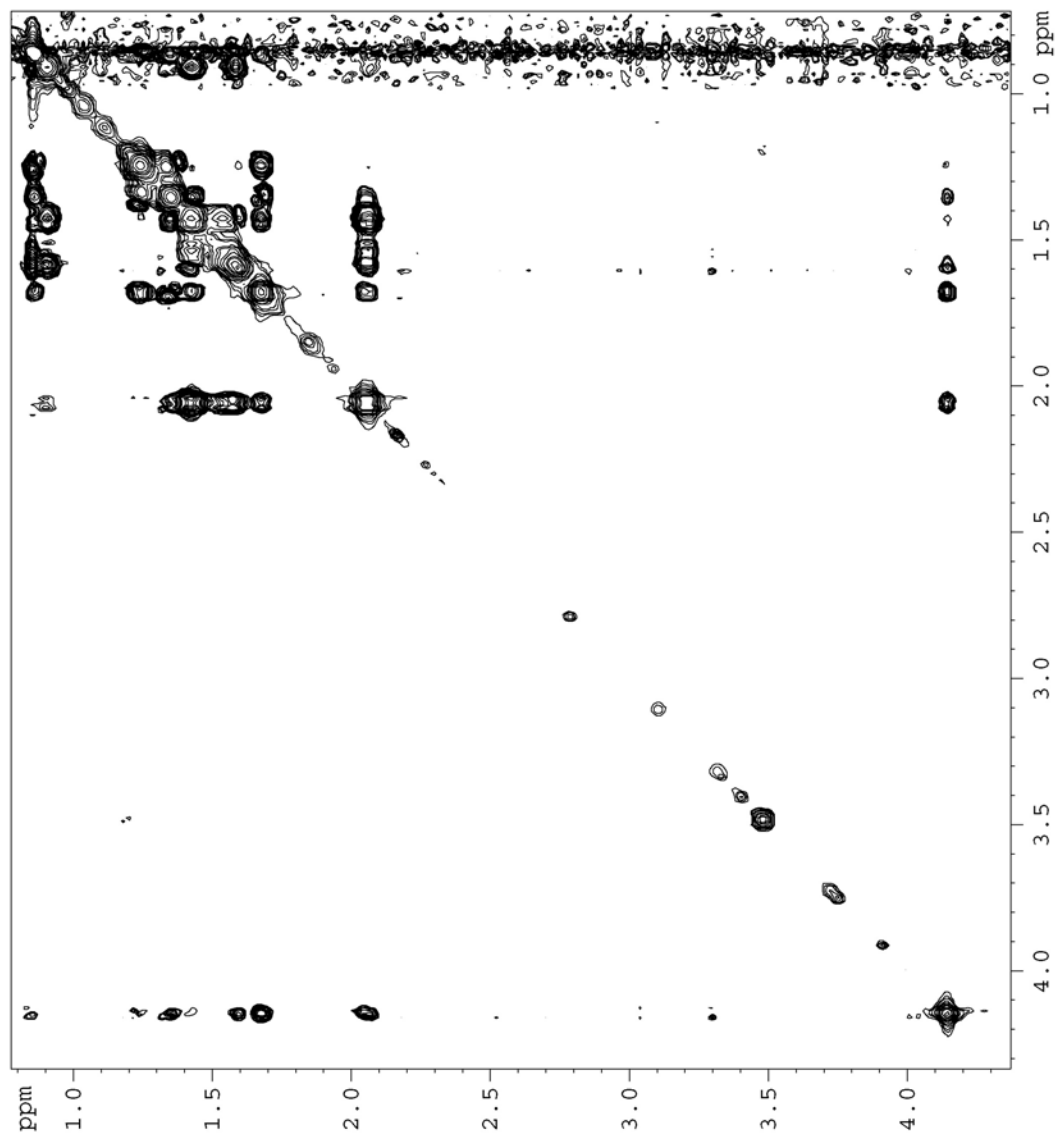


^1H - ^1H -NOESY Spectrum
(see p S12)

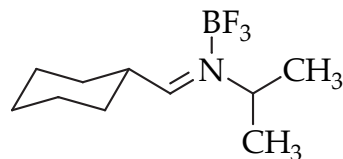
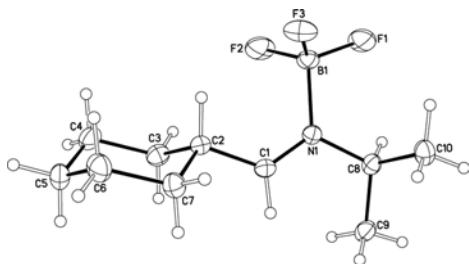




^1H - ^1H -NOESY Spectrum
(see p S12)



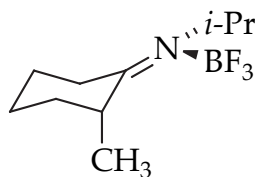
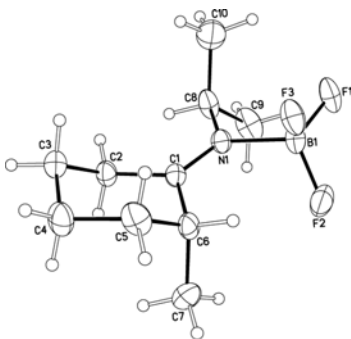
V. Crystal structures and data:



24

CCDC number: 247054

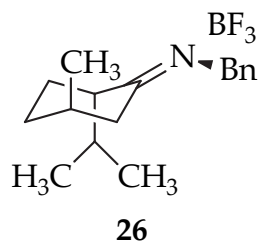
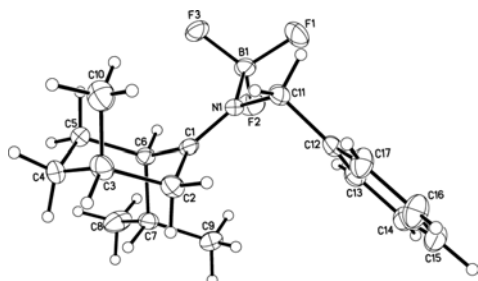
Crystal data: $C_{10}H_{19}BF_3N$, FW 221.07, Orthorhombic, Space group $Pbca$, $a = 10.6045(10) \text{ \AA}$, $b = 11.0631(10) \text{ \AA}$, $c = 19.7482(19) \text{ \AA}$, $V = 2316.8(4) \text{ \AA}^3$, $F(000) = 944$, $Z = 8$, $T = 100^\circ\text{C}$, $\mu = 0.106 \text{ mm}^{-1}$, $D_{\text{calcd}} = 1.268 \text{ Mg/m}^3$, Crystal size $0.40 \times 0.40 \times 0.30 \text{ mm}^3$, $2\theta_{\text{max}} = 49.41^\circ$ (CCD area detector, $\text{MoK}\alpha$ radiation), 212 parameters, $\text{GOF} = 1.118$, $wR(F^2) = 0.1050$, $R_1 = 0.0419$ [1970 data with $I > 2\sigma(I)$].



25

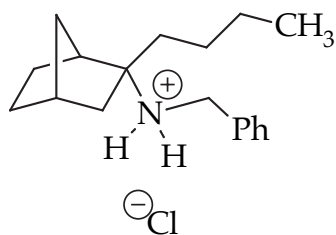
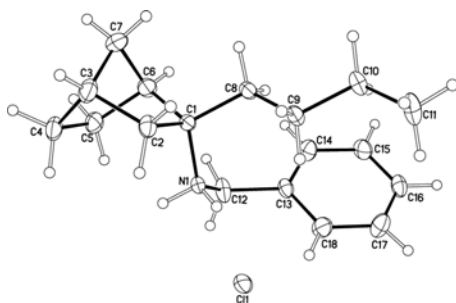
CCDC number: 246672

Crystal data: $C_{20}H_{38}B_2F_6N_2$, FW 442.14, Orthorhombic, Space group $Pbca$, $a = 12.3045(6) \text{ \AA}$, $b = 15.9117(7) \text{ \AA}$, $c = 24.1391(12) \text{ \AA}$, $V = 4726.1(4) \text{ \AA}^3$, $F(000) = 1888$, $Z = 8$, $T = 100^\circ\text{C}$, $\mu = 0.104 \text{ mm}^{-1}$, $D_{\text{calcd}} = 1.243 \text{ Mg/m}^3$, Crystal size $0.50 \times 0.20 \times 0.15 \text{ mm}^3$, $2\theta_{\text{max}} = 49.41^\circ$ (CCD area detector, $\text{MoK}\alpha$ radiation), 423 parameters, $\text{GOF} = 1.009$, $wR(F^2) = 0.0982$, $R_1 = 0.0405$ [4027 data with $I > 2\sigma(I)$].



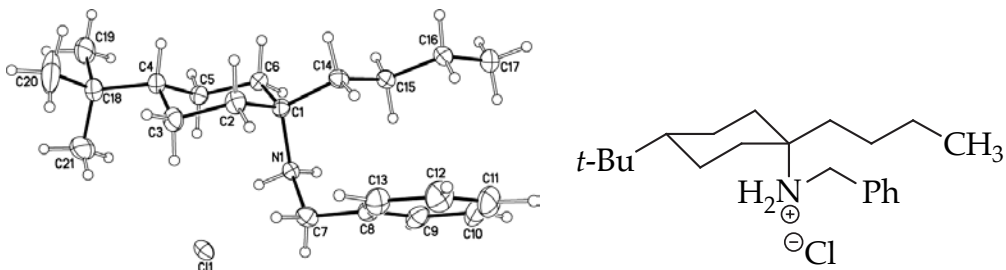
CCDC number: 246673

Crystal data: $C_{17}H_{25}BF_3N$, FW 311.19, Orthorhombic, Space group $P2(1)2(1)2(1)$, $a = 7.8196(9) \text{ \AA}$, $b = 11.4374(12) \text{ \AA}$, $c = 19.142(2) \text{ \AA}$, $V = 1712.0(3) \text{ \AA}^3$, $F(000) = 664$, $Z = 4$, $T = 100^\circ\text{C}$, $\mu = 0.092 \text{ mm}^{-1}$, $D_{\text{calcd}} = 1.207 \text{ Mg/m}^3$, Crystal size $0.40 \times 0.30 \times 0.30 \text{ mm}^3$, $2\theta_{\text{max}} = 52.74^\circ$ (CCD area detector, $\text{MoK}\alpha$ radiation), 299 parameters, $\text{GOF} = 0.971$, $wR(F^2) = 0.1043$, $R_1 = 0.0432$ [3290 data with $I > 2\sigma(I)$].



CCDC number: 246674

Crystal data: $C_{18}H_{28}ClN$, FW 293.86, Triclinic, Space group $P-1$, $a = 12.3045(6) \text{ \AA}$, $b = 0.5248(8) \text{ \AA}$, $c = 10.7006(9) \text{ \AA}$, $V = 834.92(12) \text{ \AA}^3$, $F(000) = 320$, $Z = 2$, 100°C , $\mu = 0.221 \text{ mm}^{-1}$, $D_{\text{calcd}} = 1.207 \text{ Mg/m}^3$, Crystal size $0.60 \times 0.40 \times 0.20 \text{ mm}^3$, $2\theta_{\text{max}} = 63.82^\circ$ (CCD area detector, $\text{MoK}\alpha$ radiation), 293 parameters, $\text{GOF} = 1.019$, $wR(F^2) = wR2 = 0.1198$, $R_1 = 0.0436$ [4695 data with $I > 2\sigma(I)$].



CCDC number: 246675

Crystal data: $C_{21}H_{36}ClN$, FW 337.96, Triclinic, Space group P-1, $a = 12.3939(13) \text{ \AA}$, $b = 13.7953(14) \text{ \AA}$, $c = 14.2655(15) \text{ \AA}$, $V = 2114.9(4) \text{ \AA}^3$, $F(000) = 744$, $Z = 4$, $T = 100^\circ\text{C}$, $\mu = 0.182 \text{ mm}^{-1}$, $D_{\text{calcd}} = 1.061 \text{ Mg/m}^3$, Crystal size $0.50 \times 0.25 \times 0.15 \text{ mm}^3$, $2\theta_{\text{max}} = 59.82^\circ$ (CCD area detector, MoK α radiation), 703 parameters, GOF = 1.019, $wR(F^2) = 0.1223$, $R_1 = 0.0518$, [8713 data with $I > 2 \sigma(I)$].